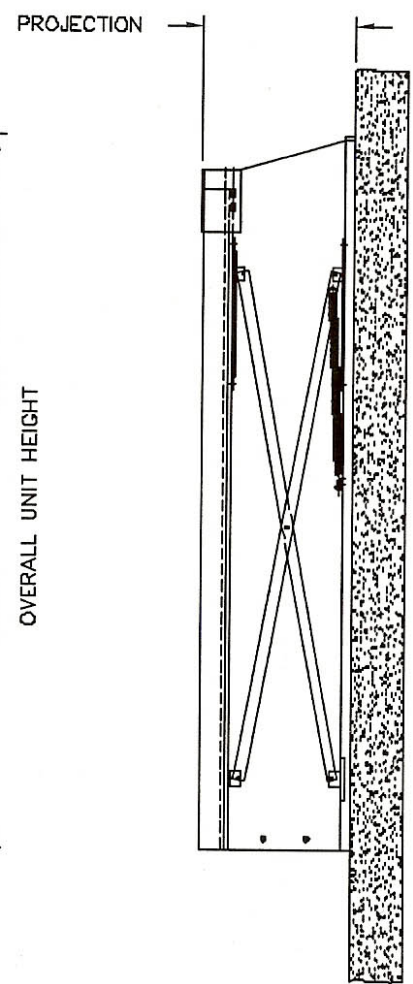
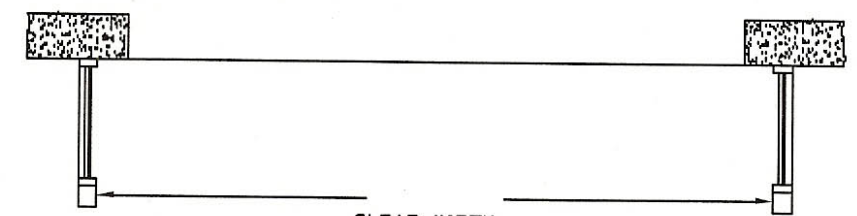


FRONT VIEW



OVERALL UNIT HEIGHT



CLEAR WIDTH
SECTION A-A

DOOR OPENING:
 _____ W x _____ H

QUANTITY: _____

COVER FABRIC: _____

COLOR: _____

OPTIONS
 (CHECK BOX IF APPLICABLE)


- EXTRA WIDTH OF UNIT

- EXTRA HEIGHT OF UNIT

- TUBULAR STEEL FRAME

- PAINTED

- GALVANIZED

| | | |
|--------------------------|--|------------------|
| S. S. QUOTE REF. # _____ |  SUPERSEAL Mfg. Ltd. | |
| CUSTOMER _____ | | |
| APPROVED BY: _____ | SERIES 0601 RETRACTABLE TRAIN SHELTER - 3 SIDED | |
| P/O No.: _____ | DATE: DEC.18/00 | SCALE: 1:36 |
| DATE: _____ | DRAWN: GK | DWG NO: L601-B / |
| | | PART NO: 15-0127 |

Digitally signed by Cam Goldberg
 on Cam Goldberg, ou IT Department, cn Super Seal Mfg. Ltd.
 cncA
 Date: 2002.04.16 15:33:35 -0700
 Reason: Document is certified
 Woodbridge, ON